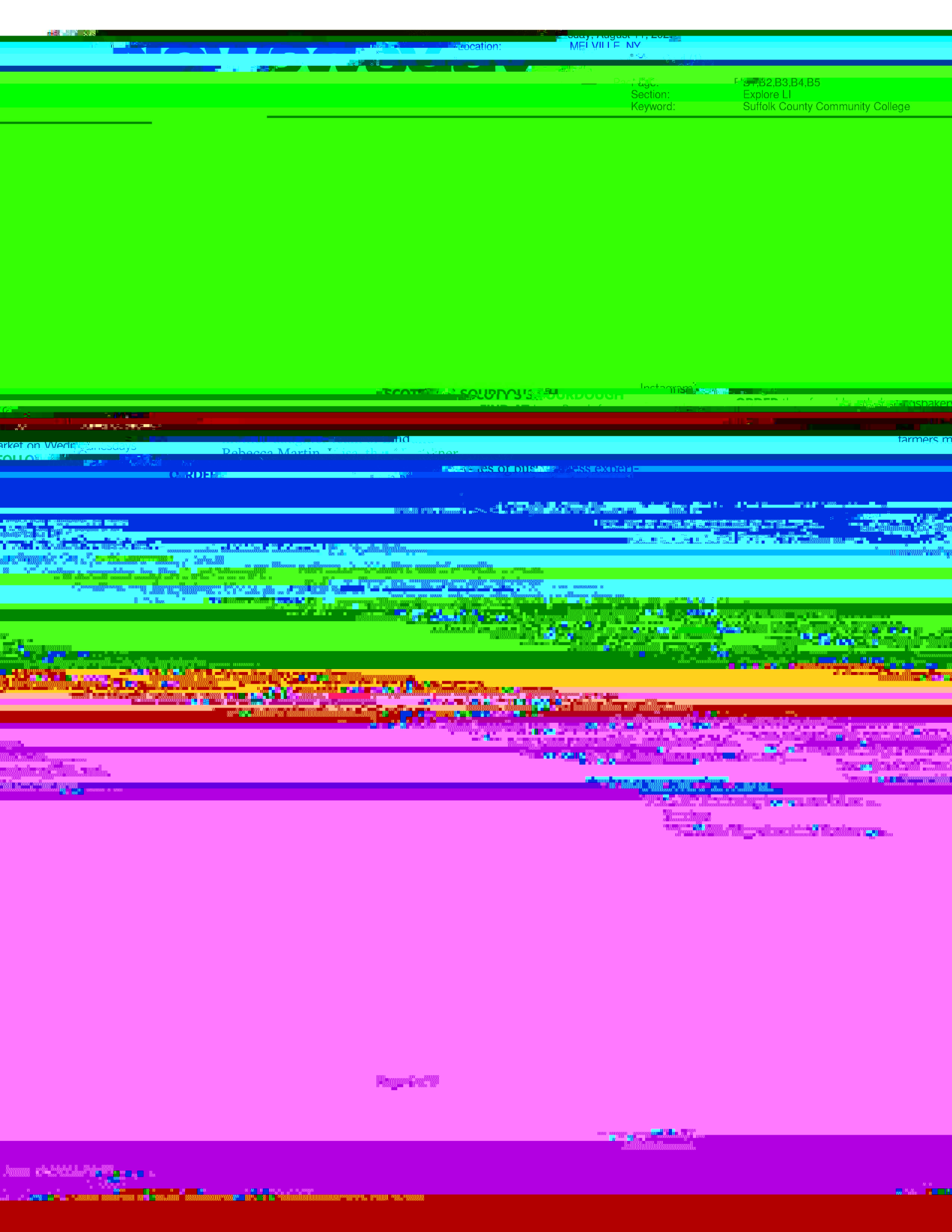
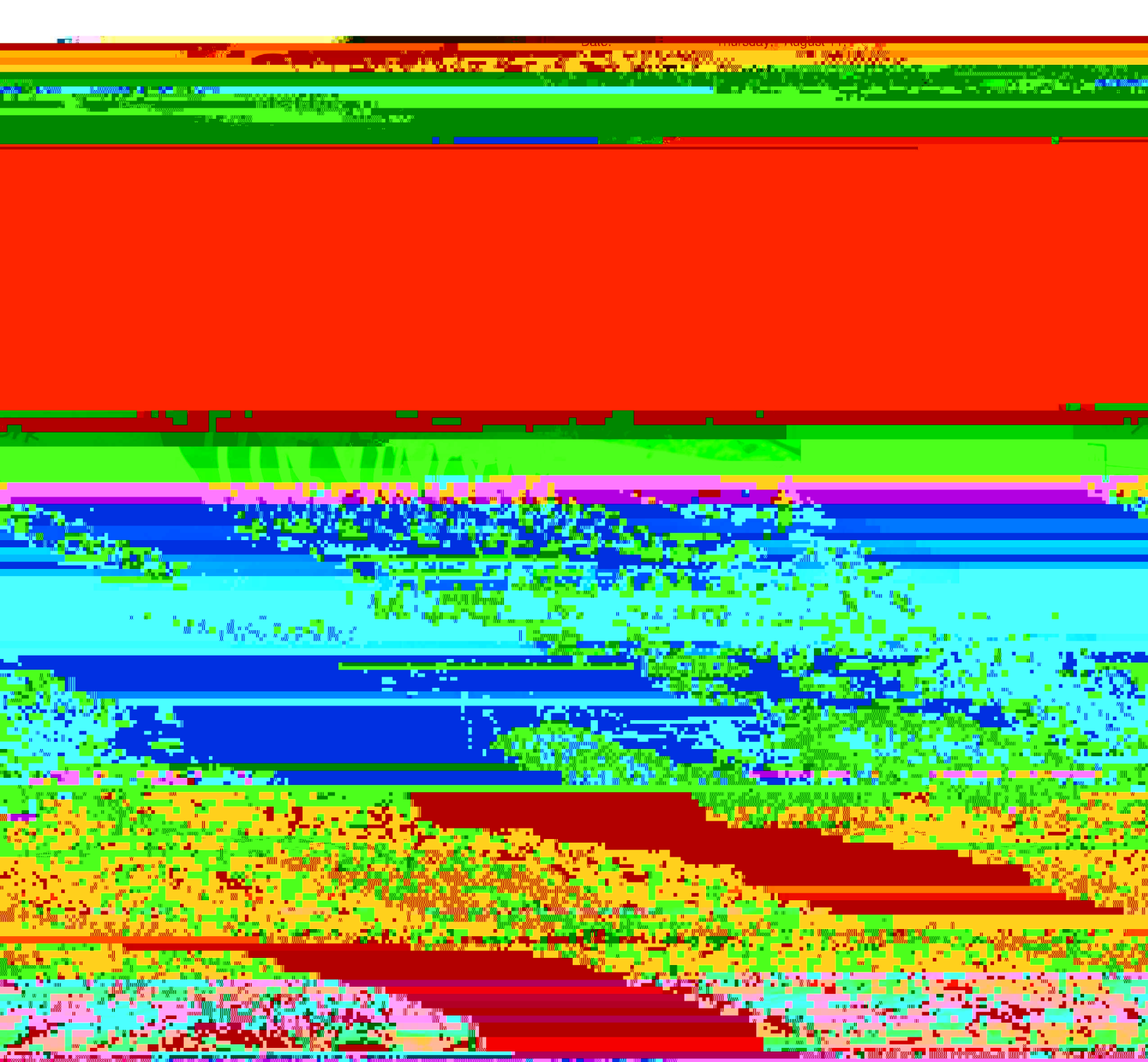




Figure 10.7





QUESTION

1. Write the following in short.

(a) What is the difference between a **verb** and a **noun**?

(b) Give an example of a **verb** and a **noun**.

(c) What is the difference between a **verb** and a **pronoun**?

(d) Give an example of a **verb** and a **pronoun**.

(e) What is the difference between a **verb** and a **preposition**?

(f) Give an example of a **verb** and a **preposition**.

(g) What is the difference between a **verb** and a **conjunction**?

(h) Give an example of a **verb** and a **conjunction**.

(i) What is the difference between a **verb** and a **adverb**?

(j) Give an example of a **verb** and a **adverb**.

(k) What is the difference between a **verb** and a **adjective**?

(l) Give an example of a **verb** and a **adjective**.

(m) What is the difference between a **verb** and a **interjection**?

(n) Give an example of a **verb** and a **interjection**.

(o) What is the difference between a **verb** and a **particle**?

(p) Give an example of a **verb** and a **particle**.

(q) What is the difference between a **verb** and a **auxiliary verb**?

(r) Give an example of a **verb** and a **auxiliary verb**.

(s) What is the difference between a **verb** and a **modal verb**?

(t) Give an example of a **verb** and a **modal verb**.

(u) What is the difference between a **verb** and a **copula**?

(v) Give an example of a **verb** and a **copula**.

(w) What is the difference between a **verb** and a **linking verb**?

(x) Give an example of a **verb** and a **linking verb**.

(y) What is the difference between a **verb** and a **transitive verb**?

(z) Give an example of a **verb** and a **transitive verb**.

(aa) What is the difference between a **verb** and a **intransitive verb**?

(ab) Give an example of a **verb** and a **intransitive verb**.

(ac) What is the difference between a **verb** and a **phrasal verb**?

(ad) Give an example of a **verb** and a **phrasal verb**.

(ae) What is the difference between a **verb** and a **gerund**?

(af) Give an example of a **verb** and a **gerund**.

(ag) What is the difference between a **verb** and a **participle**?

(ah) Give an example of a **verb** and a **participle**.

(ai) What is the difference between a **verb** and a **infinitive**?

(aj) Give an example of a **verb** and a **infinitive**.

ANSWER

(a) A **verb** is an action word, while a **noun** is a person, place, or thing.

(b) **Verb**: Run. **Noun**: Cat.

(c) A **verb** is an action word, while a **pronoun** is a word that replaces a noun.

(d) **Verb**: Run. **Pronoun**: He.

(e) A **verb** is an action word, while a **preposition** is a word that shows the relationship between a noun and another word.

(f) **Verb**: Run. **Preposition**: In.

(g) A **verb** is an action word, while a **conjunction** is a word that connects two clauses.

(h) **Verb**: Run. **Conjunction**: And.

(i) A **verb** is an action word, while a **adverb** is a word that modifies a verb.

(j) **Verb**: Run. **Adverb**: Quickly.

(k) A **verb** is an action word, while a **adjective** is a word that describes a noun.

(l) **Verb**: Run. **Adjective**: Fast.

(m) A **verb** is an action word, while a **interjection** is a word that expresses a strong emotion.

(n) **Verb**: Run. **Interjection**: Wow.

(o) A **verb** is an action word, while a **particle** is a word that is used to form a verb.

(p) **Verb**: Run. **Particle**: Up.

(q) A **verb** is an action word, while a **auxiliary verb** is a verb that is used to form a verb.

(r) **Verb**: Run. **Auxiliary verb**: Is.

(s) A **verb** is an action word, while a **modal verb** is a verb that is used to form a verb.

(t) **Verb**: Run. **Modal verb**: Can.

(u) A **verb** is an action word, while a **copula** is a verb that is used to form a verb.

(v) **Verb**: Run. **Copula**: Is.

(w) A **verb** is an action word, while a **linking verb** is a verb that is used to form a verb.

(x) **Verb**: Run. **Linking verb**: Is.

(y) A **verb** is an action word, while a **transitive verb** is a verb that has an object.

(z) **Verb**: Run. **Transitive verb**: Hit.

(aa) A **verb** is an action word, while a **intransitive verb** is a verb that does not have an object.

(ab) **Verb**: Run. **Intransitive verb**: Sleep.

(ac) A **verb** is an action word, while a **phrasal verb** is a verb that is formed by a verb and a particle.

(ad) **Verb**: Run. **Phrasal verb**: Run up.

(ae) A **verb** is an action word, while a **gerund** is a verb that is used as a noun.

(af) **Verb**: Run. **Gerund**: Running.

(ag) A **verb** is an action word, while a **participle** is a verb that is used as an adjective.

(ah) **Verb**: Run. **Participle**: Running.

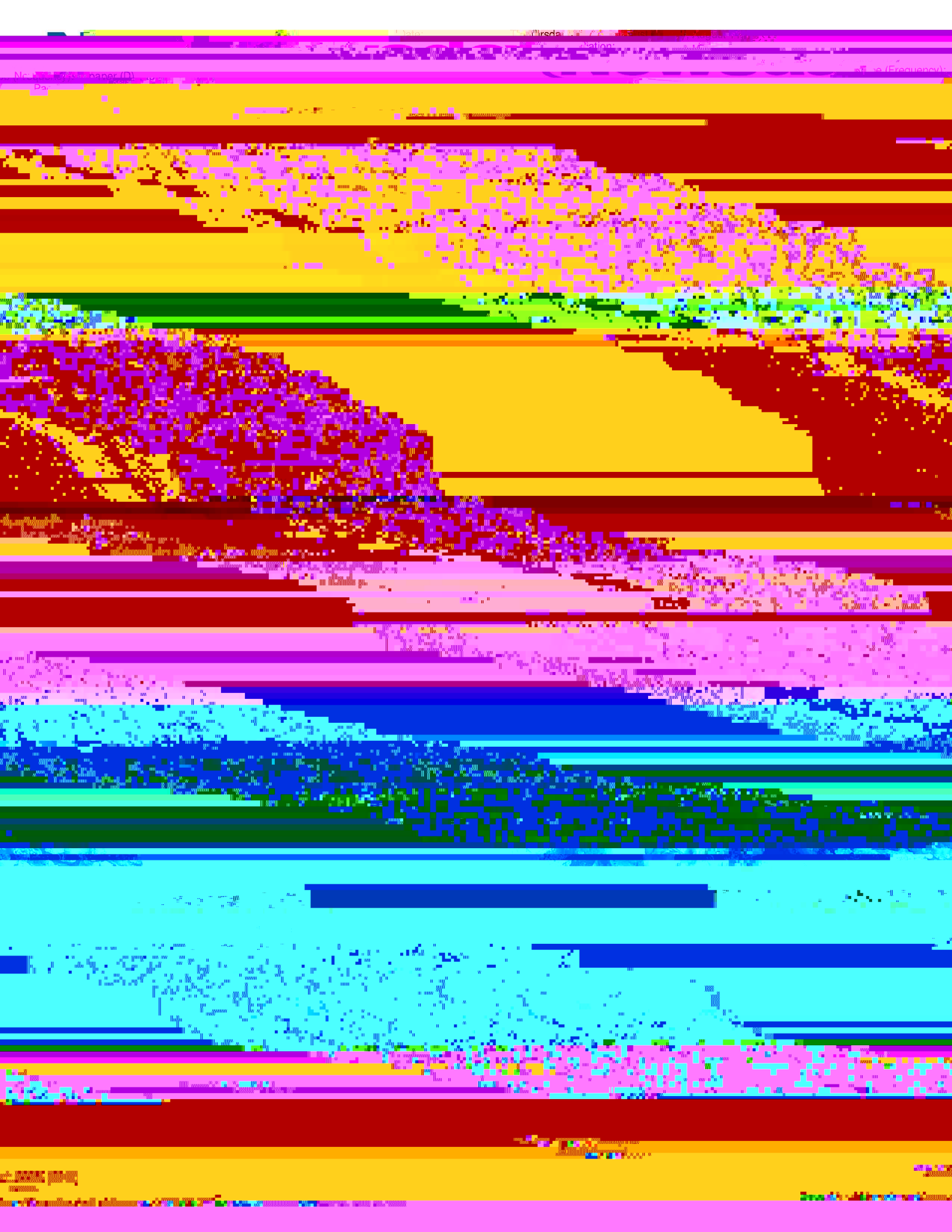
(ai) A **verb** is an action word, while a **infinitive** is a verb that is used as a noun.

(aj) **Verb**: Run. **Infinitive**: To run.

Page No. _____

Page No. _____

Page No. _____



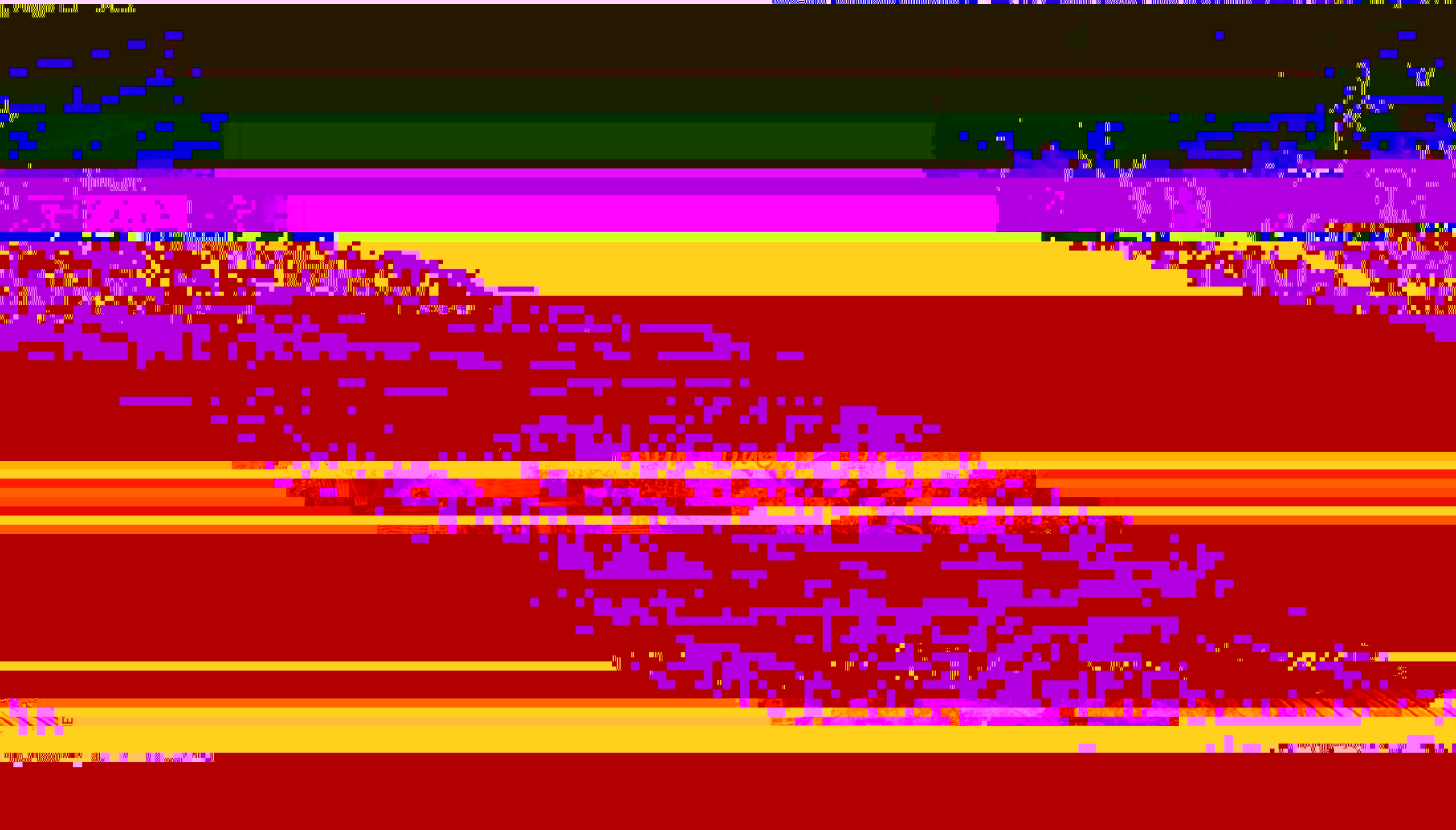
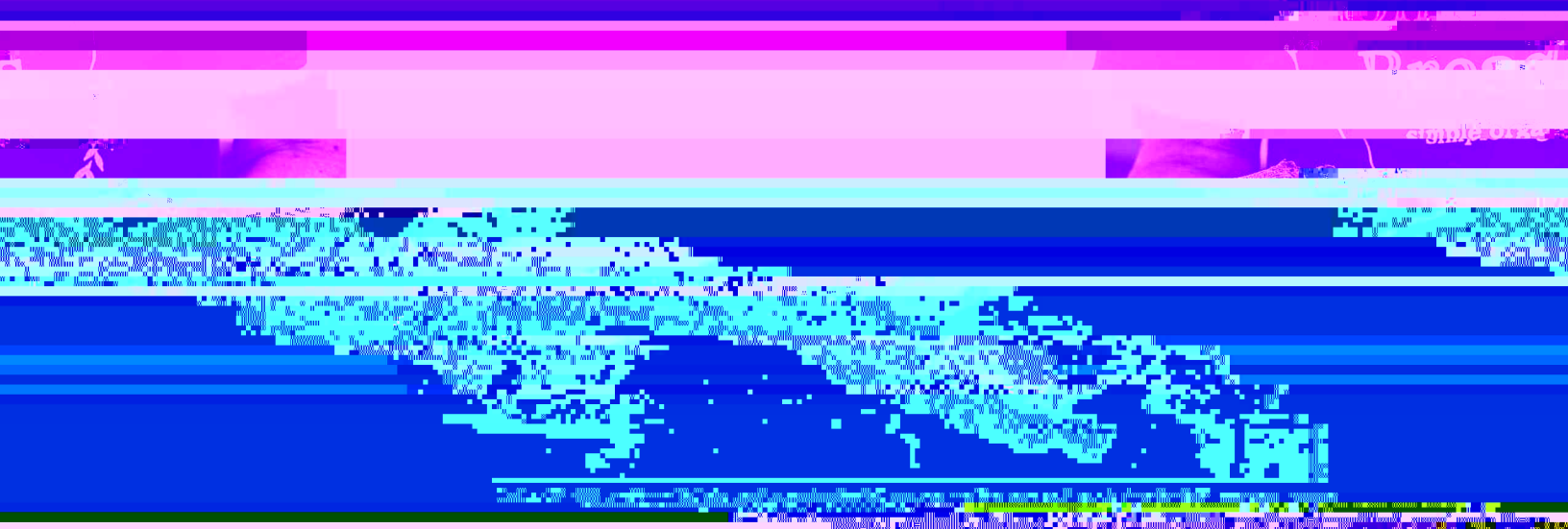
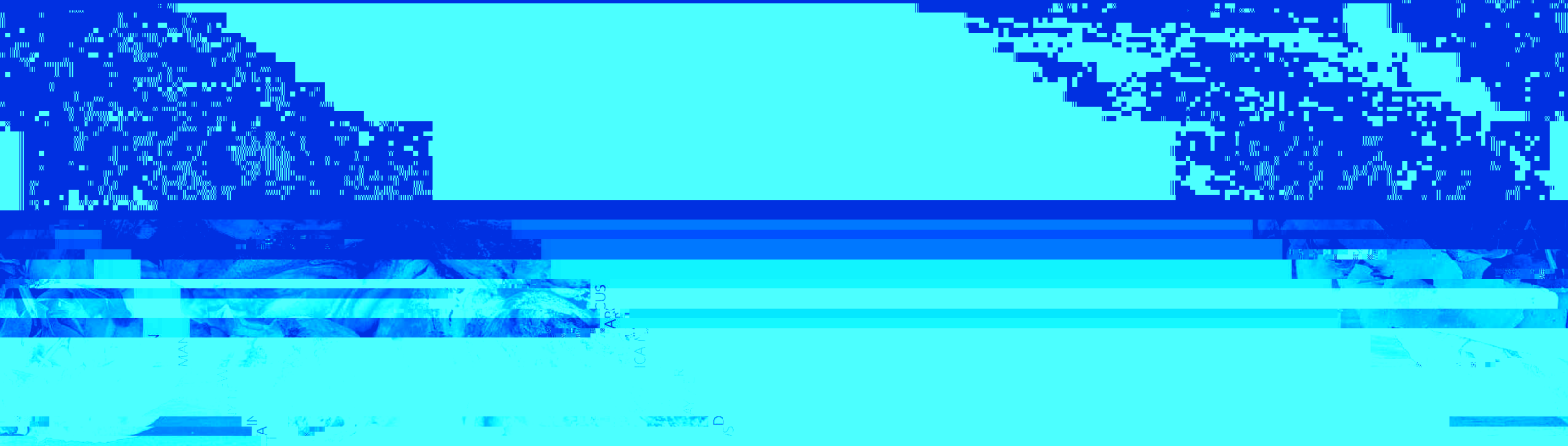


Figure 1

Figure 2



sculpture by [unreadable] in the courtyard of the [unreadable] building.

sculpture by [unreadable] in the courtyard of the [unreadable] building.



sculpture by [unreadable] in the courtyard of the [unreadable] building.

sculpture by [unreadable] in the courtyard of the [unreadable] building.



sculpture by [unreadable] in the courtyard of the [unreadable] building.